

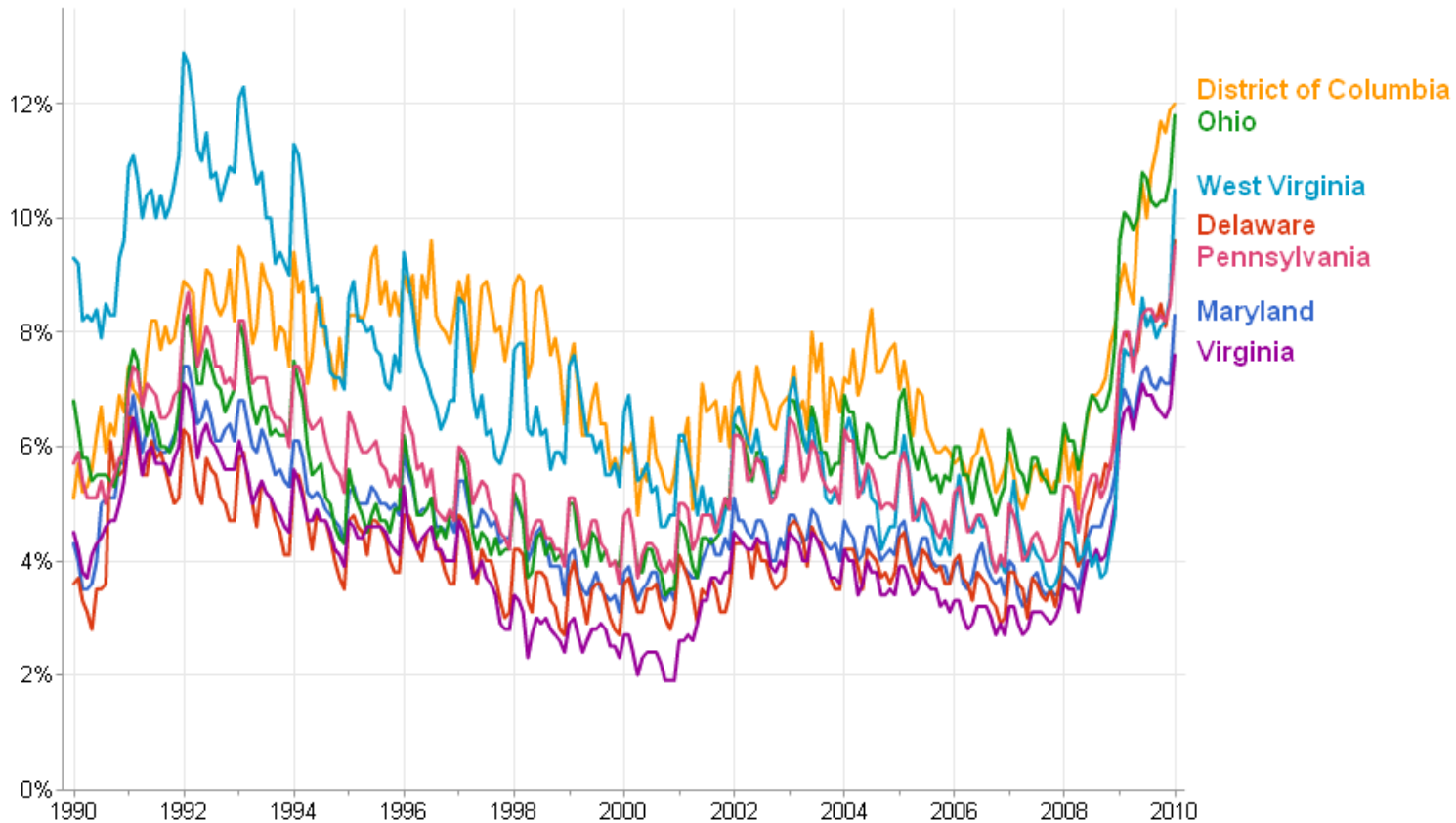
Region 2 Employment and Career Services Report

Murty Polavarapu
March 20, 2010
San Diego, CA

Region 2 Unemployment Rate Trend

Unemployment rate

The percent of the labor force that is unemployed, not seasonally adjusted. [More info >](#)



Northern Virginia

- "...it doesn't seem that our concerns are running as high as the National or Regional base.
- Northern VA is running at or below the 5% level,
- My last three job fairs (on the employer side, not employee...) were mostly filled with candidates from our industry looking to change, not get, jobs.
- *contradiction with crowded job fair?*



[Crowded Job Fair](#)

Region 2 – South Jersey Section

- “At the moment we are hiring and the out look for the area looks pretty good. I think we are over the economic hurdle and it looks like we are making good progress.”

Region 2 – Baltimore Section

- **As an IEEE member who has recently gone through a layoff and a 6 month job search which has thankfully closed as of last week,** ...hands on view of the market in the **Baltimore** area. several other engineers who are going through similar issues right now.
- My history - I have been **an IEEE member for about 24 years** My job at my previous employer,disappeared back in September when the company went bankrupt.no severance package as they had no money left to offer one

Baltimore *cont'd*

-as I keep my resume up to date as a rule. What I did find was that in the current Baltimore / Washington job market, **unless you have an active security clearance** or some very specific job skills that a company is looking for, you won't get past the front door or even be able to approach it unless you happen to know someone on the inside.
- In my case, I had not had an active clearance in 10 years since I left Northrop Grumman. **After 6 months I was lucky enough to find a position with a local company that was willing to sponsor a clearance and did not require one to get in the door. What did get me in the door was several former co-workers from Northrop Grumman that had been at this new employer for several years. Some are IEEE members, but I was not aware that they worked for this employer and they didn't know I was looking for a job.**

Baltimore *cont'd*

- The problems I have encountered are pretty common ...long with contractors collecting resumes for jobs with BRAC locations in the area that don't exist yet. I probably submitted close to 100 job applications over the last 6 months and was already doing everything that the Maryland Department of Labor had suggested in their local courses (some excellent training and advice I might add). **I might have gotten this job sooner had there been some kind of member roster for the area that could have been consulted.**
- **Networking is ultimately what got me the job** but from what I can see the network is still broken in a lot of places.

Pittsburgh Section

- Inputs more pertinent to CWPC purview
 1. US corporate taxes must be reduced from (I believe it is currently 36%) to 25% ...
 2. US tax write offs for R&D must be restored/increased ...
 3. Barriers for immigration of high skilled talent must be reduced to 'make the pie bigger' by luring entrepreneurs and risk takers to the US ...
 4. To inspire future engineers, the US government must continue to sponsor high risk/return projects (i.e. - Return to Moon, Mars mission, etc.)
 5. Liability and tort reform for employees.

General Observations

- Defense industry stagnant or employment reductions
 - Northrop Grumman, BAE Systems, Lockheed Martin announced moderate reductions
- May continue for rest of 2010

Region 2 Actions

- Highlighted available career resources at Winter Region 2 Meeting (Feb 2010 Baltimore)
- Pittsburgh Section and Lehigh Valley Section interested in organizing Career Workshops
 - Will work out the details in the next few weeks